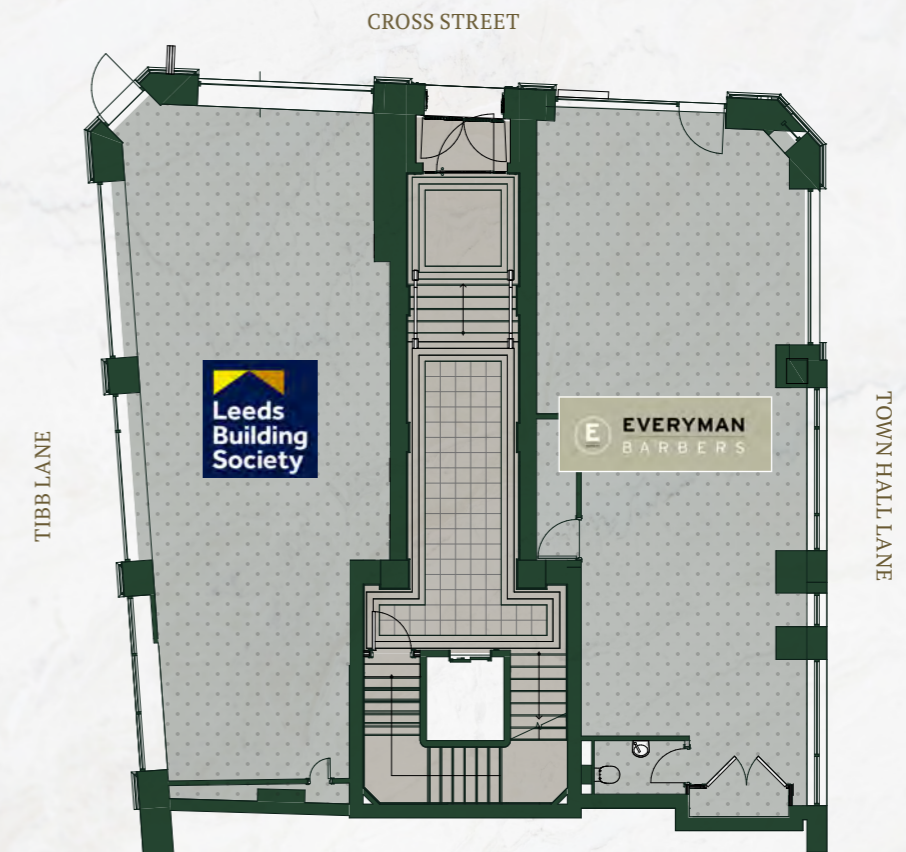


FLEXIBLE FLOOR PLATES

The building's large, flexible floor plates are suitable for all styles of fit out, from high-density occupation right through to a cellurised office configuration.

Phoenix is arranged over ground and seven upper floors. The space is ideally suited to accommodate small-medium sized businesses looking for a fresh new office space on the doorstep of great amenities.

Floor	Sq ft	Sq m
1 st	Let - Forever Manchester	
2 nd (Available)	1,665	154.67
3 rd	SGI Consulting Engineers	
4 th	Bentley	
5 th (Available)	1,645	152.82
6 th (Available)	1,597	148.36
7 th	Let - Harworth Group	



GROUND FLOOR



TYPICAL FLOOR